

MODULAR POWER SUPPLY SYSTEM AC + DC



Supplied without frame - Frame on next page
Presented on MODULO-2 frame

QUICK-AL40 PRESENTED ON MODULO-2 FRAME (page 158) WITH OPTIONAL LOADS.

Comprises

- 1 wheeled cabinet (see description page 69)
- 2 Analogue voltmeter 450V and ammeter 20A modules.
- 1 Analogue voltmeter 450V and ammeter 10A module
- 2 Analogue voltmeter 300V and ammeter 2.5A modules.
- 1 Interface module, 4mm safety terminals for MAIN THREE-PHASE output.
- 1 Interface module, 4mm safety terminals for MAIN DC output.
- 1 Interface module, 4mm safety terminals for AUXILIARY SINGLE-PHASE output.
- 1 Interface module, 4mm safety terminals for AUXILIARY DC output.
- 1 Interface module, 4mm safety terminals for MAINS THREE-PHASE output.
- 1 set of safety leads for making connections.

Three-phase power supply 3 x 400V + N. Mains lead, 3 metres.



QUICK-AL40 is a set of modules combined with a power supply on wheels, for using several voltage sources AC/DC, fixed or variable.

Operates with a resistive load (optional) and a capacitive load (optional) with permanent power 4000VA.

ref. QUICK-AL40

CAPACITIVE LOAD

- Adjustable from 0 to nominal power
- 6 switches
- Jumpers for coupling
- Power 0.5 or 2 or 4kVAR

ref. QUICK-CH05 (0.5kVAR)

ref. QUICK-CH20 (2kVAR)

ref. QUICK-CH40 (4kVAR)



RESISTIVE LOAD

- Adjustable from 0 to nominal power
- 6 switches
- Jumpers for coupling
- Power 0.5 or 2 or 4kW

ref. QUICK-RHP05 (0.5kW)

ref. QUICK-RHP20 (2kW)

ref. QUICK-RHP40 (4kW)



The loads are designed to be easily removed from the frame.

Description of the cabinet

Wheeled cabinet equipped with thermal-magnetic and RC circuit-breakers for safely distributing the different sources of power supply.

- **Emergency stop and main start/stop button**
- **Main three-phase: 0-450V AC, 8A**

Can be varied by autotransformer on the side of the cabinet and protected against overloads and short-circuits. The proposed voltage is 0-450V between phases.

A thermal magnetic circuit-breaker protects this output. A contactor with control button ensures Start/Stop switching, provided that the autotransformer is at 0 voltage.

An indicator signals powering up.

- **Main DC voltage: 0-270V DC, 16A**

0-270V variable, by autotransformer, with isolating transformer.

The set is protected against overloads and short-circuits.

Rectification is generously oversized (ripple factor 4%).

A thermal-magnetic circuit-breaker protects this output. A contactor with control button ensures Start/Stop switching, provided that the autotransformer is at 0 voltage.

An indicator signals powering up.

- **Auxiliary single-phase voltage: 0-250VAC 2.5A**

0-250V variable, by single-phase autotransformer protected against overloads and short-circuits. A button provides Start/Stop switching. An indicator signals powering up.

- **Auxiliary DC voltage: 0-250VDC / 2,5A**

0-250V variable, by single-phase autotransformer with isolating transformer, to standard NFC61558; the set is protected against overloads and short-circuits.

A button provides Start/Stop switching. An indicator signals powering up.

Double alternating rectification, with ripple factor varying with the load.

- **Mains three-phase 3 x 400V AC**

Protected by circuit-breaker. A contactor with control button provides Start/Stop switching. An in-dicator signals powering up.

- **Mains outlets 230V AC - 2P+E**

Protected by circuit-breaker. An indicator signals powering up.

FRAMES FOR MODULAR SOLUTIONS

FRAMES ON WHEELS



SUP-AKR-1



SUP-AKR-11



SUP-AKR-22-T

Réf.	SUP-AKR-1	SUP-AKR-1T	SUP-AKR-11	SUP-AKR-11T	SUP-AKR-2	SUP-AKR-2T	SUP-AKR-22	SUP-AKR-22T
Simple face	yes	yes	no	no	yes	yes	no	no
Double face	no	no	yes	yes	no	no	yes	yes
Height	1610mm	1610mm	1610mm	1610mm	2000mm	2000mm	2000mm	2000mm
Width	940mm	940mm	940mm	940mm	1490mm	1490mm	1490mm	1490mm
Depth	500mm	500mm	500mm	700mm	750mm	750mm	750mm	900mm
Number of modules max (L166mm x H250mm)	20	20	2 x 20	2 x 20	40	40	2 x 40	2 x 40
Rack for leads (30 fingers)	1	1	2	2	1	1	2	2
Shelf 19mm	0	1	0	2	0	1	0	2

FRAMES ON TABLE



ref. SUP-AK-6

PERFECT FOR SOLUTIONS WITH 6 MODULES MAXIMUM

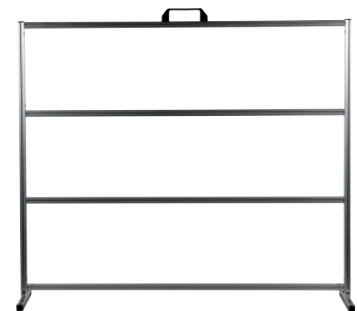
- Dimensions H 610mm x W 590mm x D 310mm
- Takes 6 modules (W-166mm x H-250mm)



ref. SUP-AK-9

PERFECT FOR SOLUTIONS WITH 9 MODULES MAXIMUM

- Dimensions H 880mm x W 590mm x D 310mm
- Takes 9 modules (W-166mm x H-250mm)



ref. SUP-AK-15

PERFECT FOR SOLUTIONS WITH 15 MODULES MAXIMUM

- Dimensions H 880mm x W 1040mm x D 380mm
- Takes 15 modules (W-166mm x H-250mm)

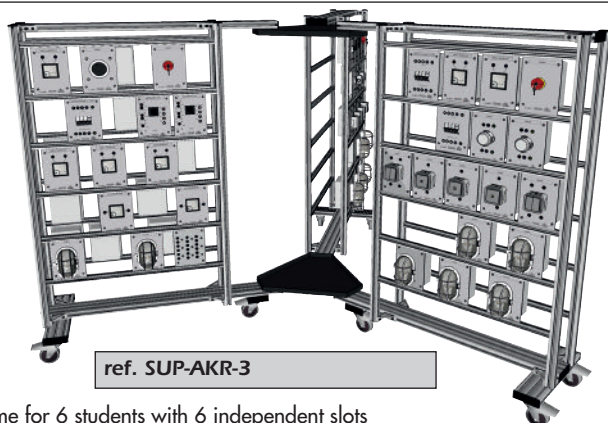
FRAME TO BE FIXED ON TABLE



ref. SUP-AK-20

- Frame with clamps, mobile and easy to store.
- Attaches to any support up to 60mm thick.
- Dimensions: H-1360mm x W-1440mm x D-500mm
- Takes to 20 modules (W-166mm x H-250mm)

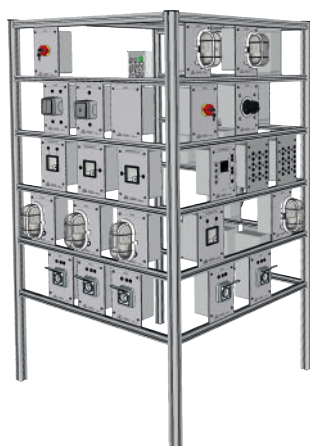
FOLDING FRAME - 6 SIDES



ref. SUP-AKR-3

- Frame for 6 students with 6 independent slots
Easily foldable at the end of use. Mounted on 9 wheels (6 with brakes).
- Dimensions: Unfolded: Ø3000mm Height 1810mm
Ground clearance folded: 1850 x 1080mm
- Takes to 25 modules per side (W-166mm x H-250mm)

FRAME 3 SIDES



- Frame 3 sides
- Dimensions
H-1800mm x W-990mm x D-990mm
- Takes to 23 modules per face
(W-166mm x H-250mm)

ref. SUP-AKC-60

POWER CONSOLES FOR FRAMES



OPTIONS FOR FRAMES

SCREEN/KEYBOARD SUPPORT

- Screen support arm
- 3 rotation points on 2 ball joints
- Supports one screen up to 12kg
- With shelf for keyboard and mouse

ref. QUICK-ECRAN



CENTRAL UNIT SUPPORT

- Wire mesh 45x45mm
- Cabling space to rear
- Epoxy paint
- Dimensions: 400x400x195mm

ref. QUICK-UC



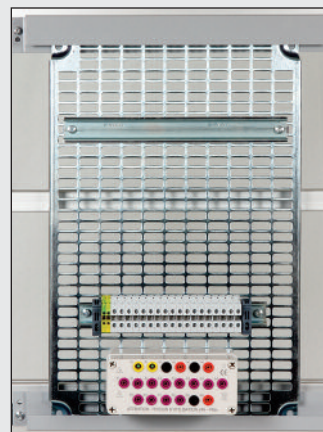
WIRING GRID

Equipped with:

- 1 Omega rail 300mm
- 1 set of 20 terminals 6mm²
- 1 box equipped with 20 safety terminals Ø4mm
- Dimensions 500x350mm

The grid can be removed instantly without tools.

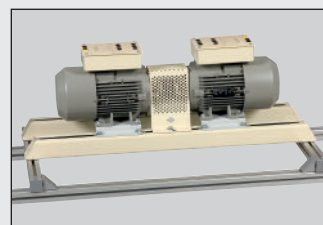
ref. QUICK-GRIL



GUIDE RAILS

- Rails for rotating machines.
- The distance between the rails can be adjusted from 70 to 380mm
- Dimension: Length 900mm
- Supplied with sliding nuts.

ref. QUICK-RGA



POWER CONSOLES FOR FRAMES

SINGLE-PHASE POWER SUPPLY



Front panel equipment

- 1 16A thermal magnetic circuit breaker
- 1 Emergency key-operated emergency stop button
- 1 Push-button on + light
- 1 230V single-phase power outlet on 4mm safety terminals
- 2 AC outlets 2P + T 230VAC

Rear equipment

- 10 Power outlets 2P + T 230VAC
- 1 Power LED

Compatible with: all SUP-AKR frames

The SUP-AKC-60 frame

The SUP-AK-20 frame

ref. PUP-AK-M

Dimensions : 500 x 135 x 120mm



The sockets at the rear of the consoles can be used to connect the modules as well as the computers

3-PHASE POWER SUPPLY



Front panel equipment

- 1 4-pole magnetothermal circuit breaker
- 1 Emergency key-operated emergency stop button
- 1 Push-button on + light
- 1 Sort output. 3 x 400V + N + T on 4mm safety terminals
- 2 AC outlets 2P + T 230VAC

Rear equipment

- 10 Power outlets 2P + T 230VAC
- 1 Power LED

Compatible with: all SUP-AKR frame

The SUP-AKC-60 frame

The SUP-AK-20 frame

ref. PUP-AK-T

Dimensions : 500 x 135 x 120mm



The sockets at the rear of the consoles can be used to connect the modules as well as the computers